

## IES Report

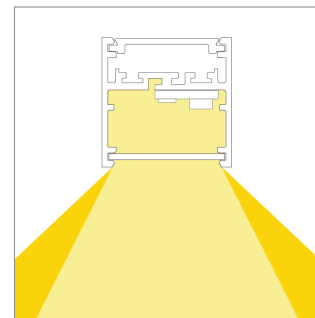
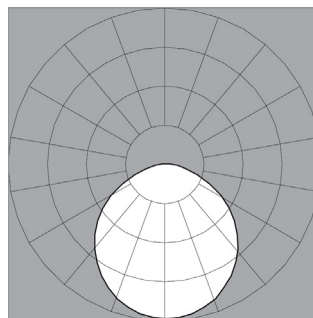
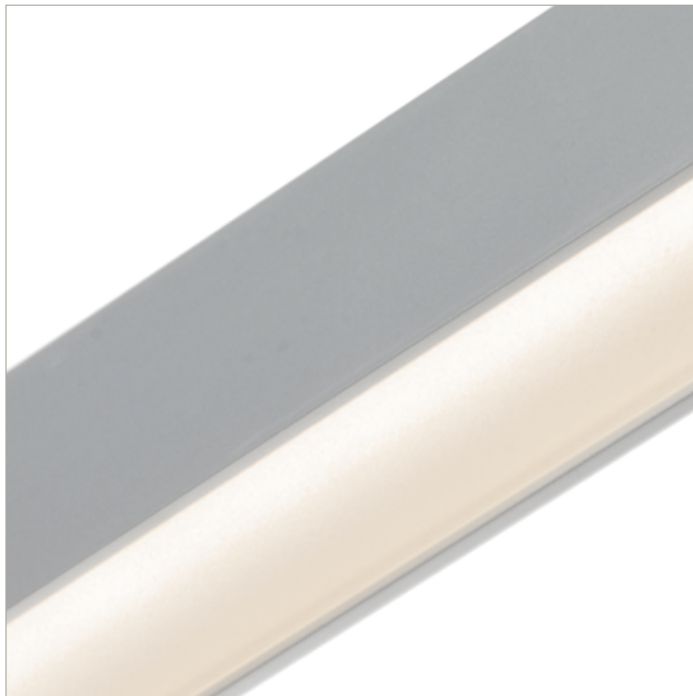
# BoxRail® | 207 | Diffuse, down | 80 CRI | LO

207-BX-XX-4-48-XX-XX-XX-XX-X-X-Z-LO-35-D1-X-AL / WH-X

	2700K	3000K	3500K	4000K
Efficacy - Lumens per Watt	75	77	79	79
Total Lumens, 4' rail length (1219mm)	1072	1106	1129	1129
Lumens per foot (305mm)	268	277	282	282
Input Power (W), 4' rail length (1219mm)	14.4	14.4	14.4	14.4
Watts per foot (305mm)	3.6	3.6	3.6	3.6
CRI	82	82	82	82

Due to the large number of options in Vode's product offering, most Vode IES reports are factored reports prepared from source reports. Source reports are the IES test reports prepared for Vode by an NVLAP accredited photometric test laboratory. Factored reports are based on data from the Vode source reports.

If the data above is in black, it is directly from a Vode source report. If it is in grey, it is factored from Vode source reports. Reference details on Vode source reports can be found on the [IES File Finder](#) page on [vode.com](#).



## IES Report

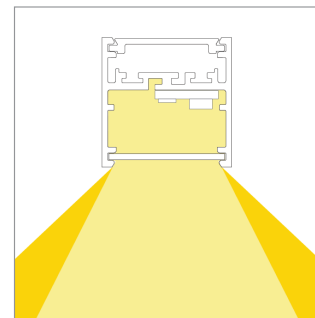
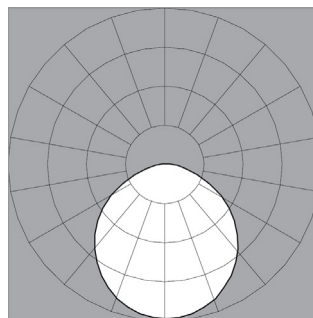
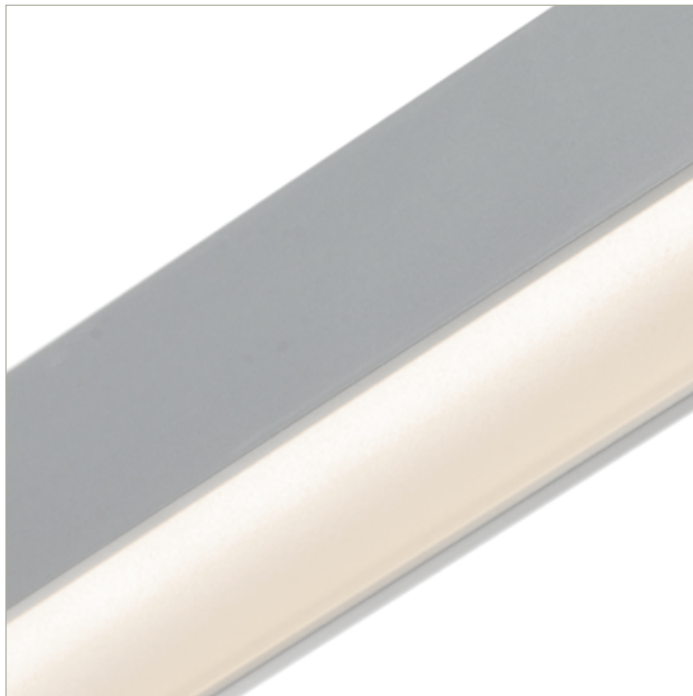
# BoxRail® | 207 | Diffuse, down | 80 CRI | SO

207-BX-XX-4-48-XX-XX-XX-X-X-Z-SO-35-D1-X-AL / WH-X

	2700K	3000K	3500K	4000K
Efficacy - Lumens per Watt	85	88	90	90
Total Lumens, 4' rail length (1219mm)	2144	2212	2257	2257
Lumens per foot (305mm)	536	553	564	564
Input Power (W), 4' rail length (1219mm)	25.3	25.3	25.3	25.3
Watts per foot (305mm)	6.4	6.4	6.4	6.4
CRI	82	82	82	82

Due to the large number of options in Vode's product offering, most Vode IES reports are factored reports prepared from source reports. Source reports are the IES test reports prepared for Vode by an NVLAP accredited photometric test laboratory. Factored reports are based on data from the Vode source reports.

If the data above is in black, it is directly from a Vode source report. If it is in grey, it is factored from Vode source reports. Reference details on Vode source reports can be found on the [IES File Finder](#) page on [vode.com](#).



## IES Report

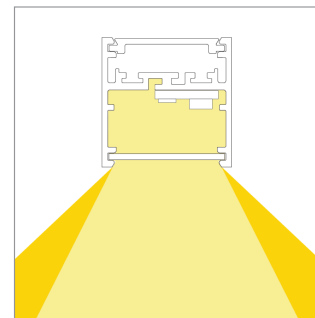
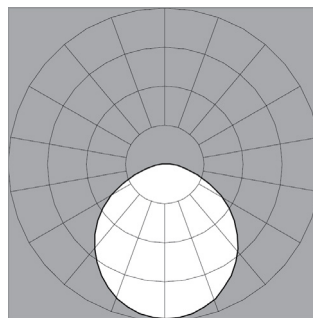
# BoxRail® | 207 | Diffuse, down | 80 CRI | HO

207-BX-XX-4-48-XX-XX-XX-X-X-Z-HO-35-D1-X-AL / WH-X

	2700K	3000K	3500K	4000K
Efficacy - Lumens per Watt	80	82	84	84
Total Lumens, 4' rail length (1219mm)	4075	4203	4289	4289
Lumens per foot (305mm)	1019	1051	1072	1072
Input Power (W), 4' rail length (1219mm)	51.6	51.6	51.6	51.6
Watts per foot (305mm)	12.9	12.9	12.9	12.9
CRI	82	82	82	82

Due to the large number of options in Vode's product offering, most Vode IES reports are factored reports prepared from source reports. Source reports are the IES test reports prepared for Vode by an NVLAP accredited photometric test laboratory. Factored reports are based on data from the Vode source reports.

If the data above is in black, it is directly from a Vode source report. If it is in grey, it is factored from Vode source reports. Reference details on Vode source reports can be found on the [IES File Finder](#) page on [vode.com](#).



## IES Report

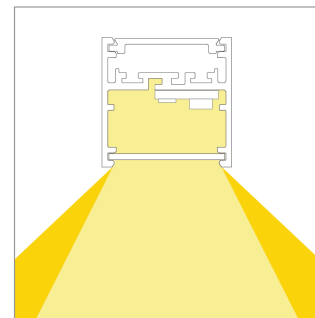
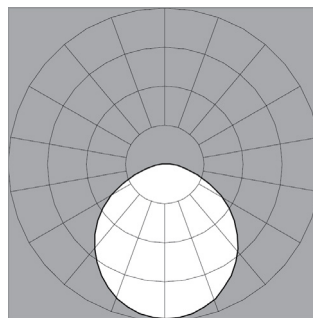
# BoxRail® | 207 | Diffuse, down | 90 CRI | LO

207-BX-XX-4-48-XX-XX-XX-XX-X-X-Z-LO-359-D1-X-AL / WH-X

	2700K	3000K	3500K	4000K
Efficacy - Lumens per Watt	65	67	68	69
Total Lumens, 4' rail length (1219mm)	924	954	973	983
Lumens per foot (305mm)	231	238	243	246
Input Power (W), 4' rail length (1219mm)	14.4	14.4	14.4	14.4
Watts per foot (305mm)	3.6	3.6	3.6	3.6
CRI	94	94	94	94

Due to the large number of options in Vode's product offering, most Vode IES reports are factored reports prepared from source reports. Source reports are the IES test reports prepared for Vode by an NVLAP accredited photometric test laboratory. Factored reports are based on data from the Vode source reports.

If the data above is in black, it is directly from a Vode source report. If it is in grey, it is factored from Vode source reports. Reference details on Vode source reports can be found on the [IES File Finder](#) page on [vode.com](#).



## IES Report

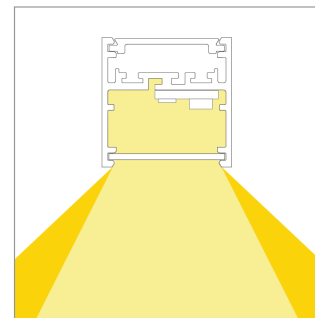
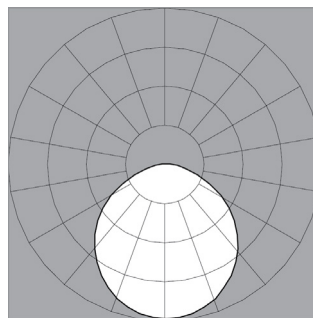
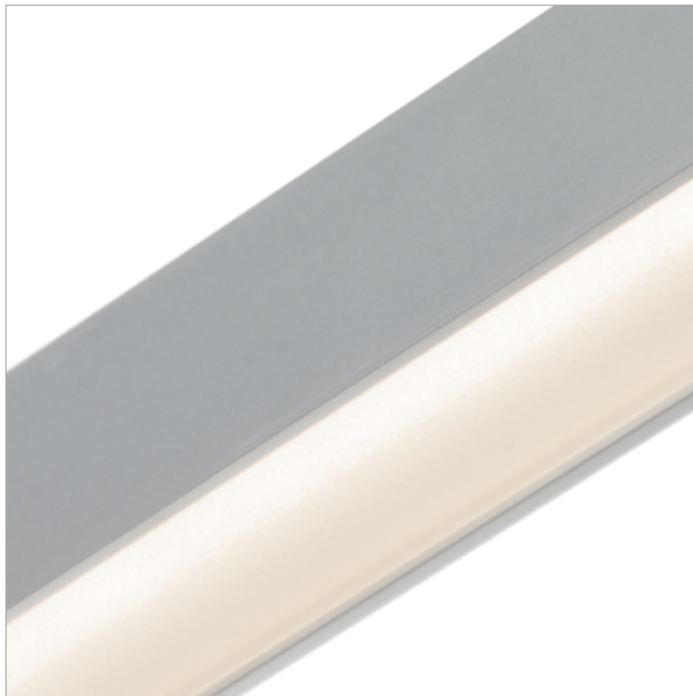
# BoxRail® | 207 | Diffuse, down | 90 CRI | SO

207-BX-XX-4-48-XX-XX-XX-XX-X-X-Z-SO-359-D1-X-AL / WH-X

	2700K	3000K	3500K	4000K
Efficacy - Lumens per Watt	74	76	78	78
Total Lumens, 4' rail length (1219mm)	1849	1907	1946	1965
Lumens per foot (305mm)	462	477	487	491
Input Power (W), 4' rail length (1219mm)	25.3	25.3	25.3	25.3
Watts per foot (305mm)	6.4	6.4	6.4	6.4
CRI	94	94	94	94

Due to the large number of options in Vode's product offering, most Vode IES reports are factored reports prepared from source reports. Source reports are the IES test reports prepared for Vode by an NVLAP accredited photometric test laboratory. Factored reports are based on data from the Vode source reports.

If the data above is in black, it is directly from a Vode source report. If it is in grey, it is factored from Vode source reports. Reference details on Vode source reports can be found on the [IES File Finder](#) page on [vode.com](#).



## IES Report

# BoxRail® | 207 | Diffuse, down | 90 CRI | HO

207-BX-XX-4-48-XX-XX-XX-X-X-Z-HO-359-D1-X-AL / WH-X

	2700K	3000K	3500K	4000K
Efficacy - Lumens per Watt	69	71	72	73
Total Lumens, 4' rail length (1219mm)	3513	3623	3697	3734
Lumens per foot (305mm)	878	906	924	934
Input Power (W), 4' rail length (1219mm)	51.6	51.6	51.6	51.6
Watts per foot (305mm)	12.9	12.9	12.9	12.9
CRI	94	94	94	94

Due to the large number of options in Vode's product offering, most Vode IES reports are factored reports prepared from source reports. Source reports are the IES test reports prepared for Vode by an NVLAP accredited photometric test laboratory. Factored reports are based on data from the Vode source reports.

If the data above is in black, it is directly from a Vode source report. If it is in grey, it is factored from Vode source reports. Reference details on Vode source reports can be found on the [IES File Finder](#) page on [vode.com](#).